

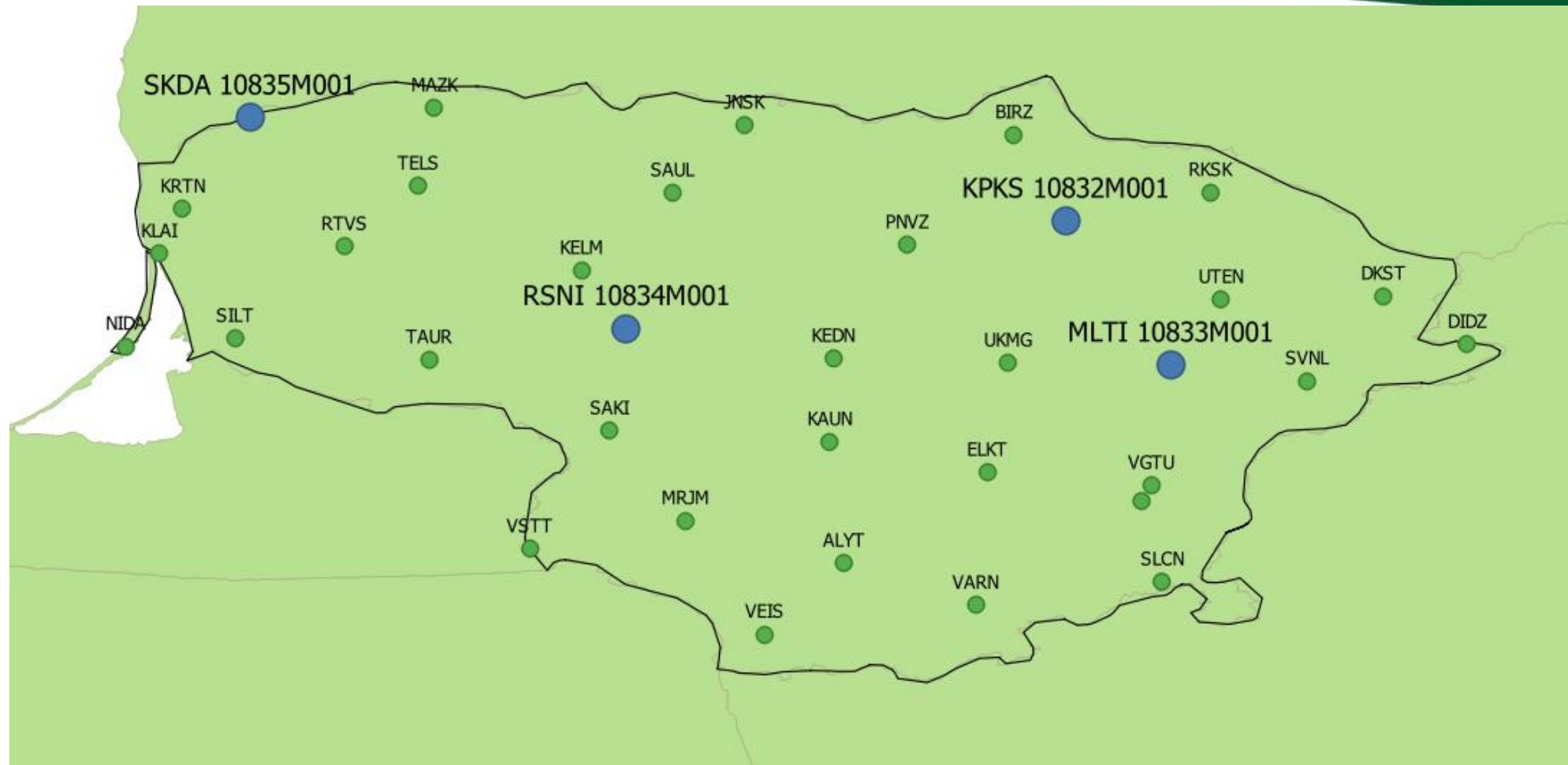
NATIONAL REPORT OF LITHUANIA



Jokūbas Ogintas

2023 Tallin

National GNSS Network LitPOS



New stations were established

- In 2021 MLTI and RSNI LitPOS stations established.
- Later in 2022 SKDA and KPSK stations were launched.
- All new stations are using receiver type TRIMBLE NETR9 and antenna type TRM59900.00
- In 2023 we did upgrade PIVOT version from v4.7 to v5.1.

Time series

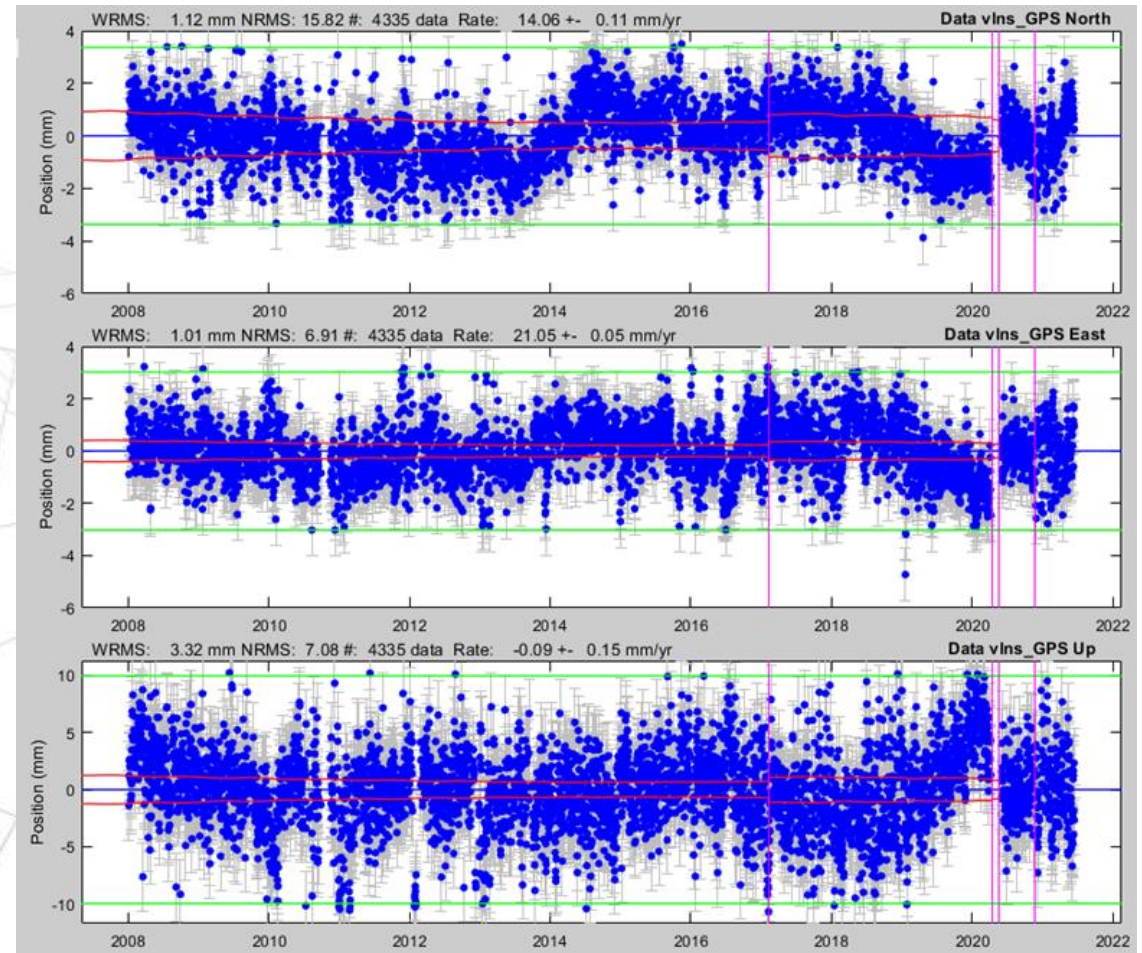


Time series example of VLNS GNSS station in Lithuania, Vilnius. Coordinates change based on daytime measurements.

North coordinate velocity – $14,06 \pm 0,11$ mm/yr

East coordinate velocity – $21,05 \pm 0,05$ mm/yr

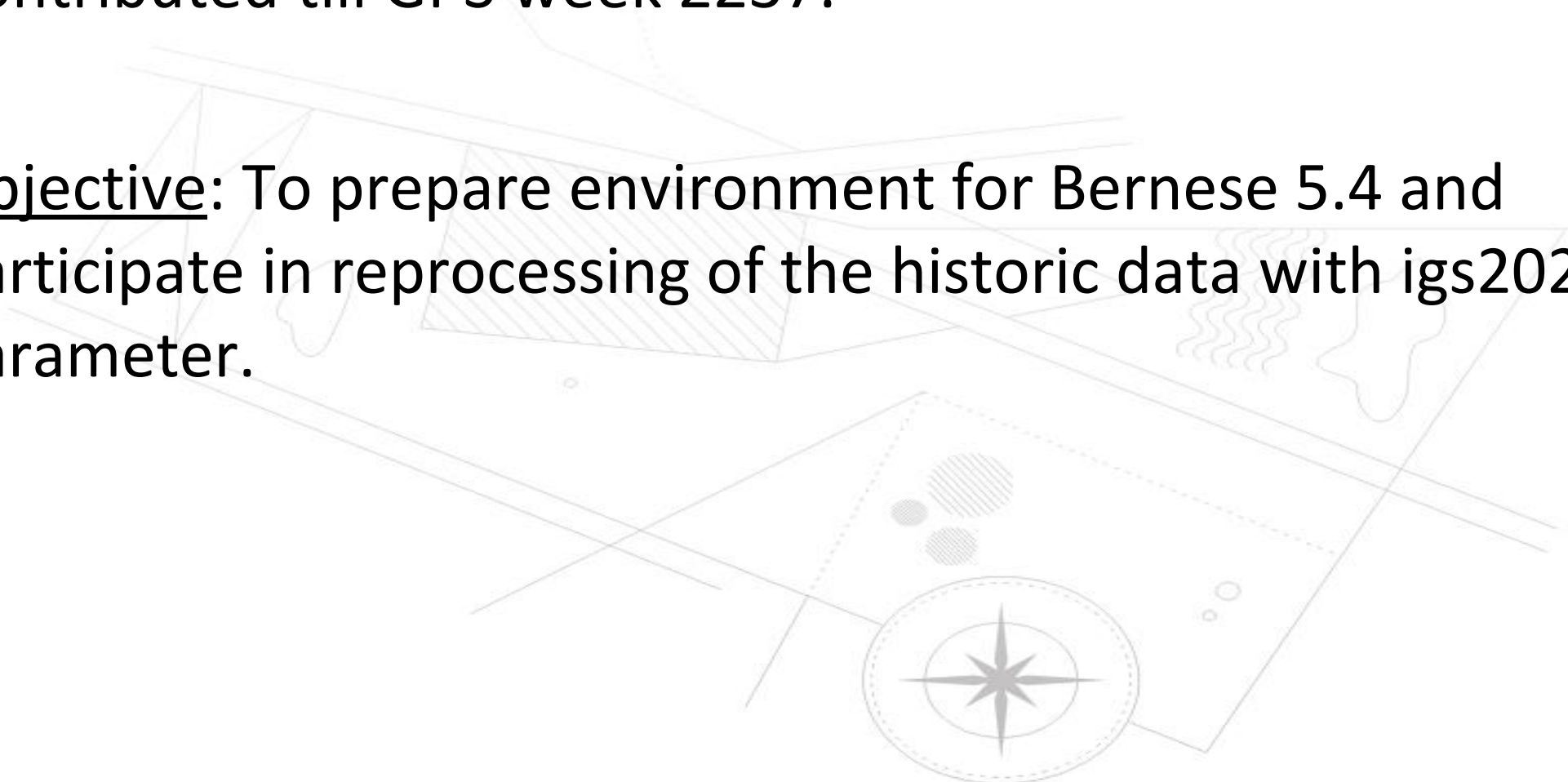
Up coordinate velocity – $-0,09 \pm 0,15$ mm/yr



Operational status



- Contributed till GPS week 2237.
- Objective: To prepare environment for Bernese 5.4 and participate in reprocessing of the historic data with igs2020 parameter.



Thank you for listening

