



A LEAP TOWARDS  
SAE L4 AUTOMATED  
DRIVING FEATURES

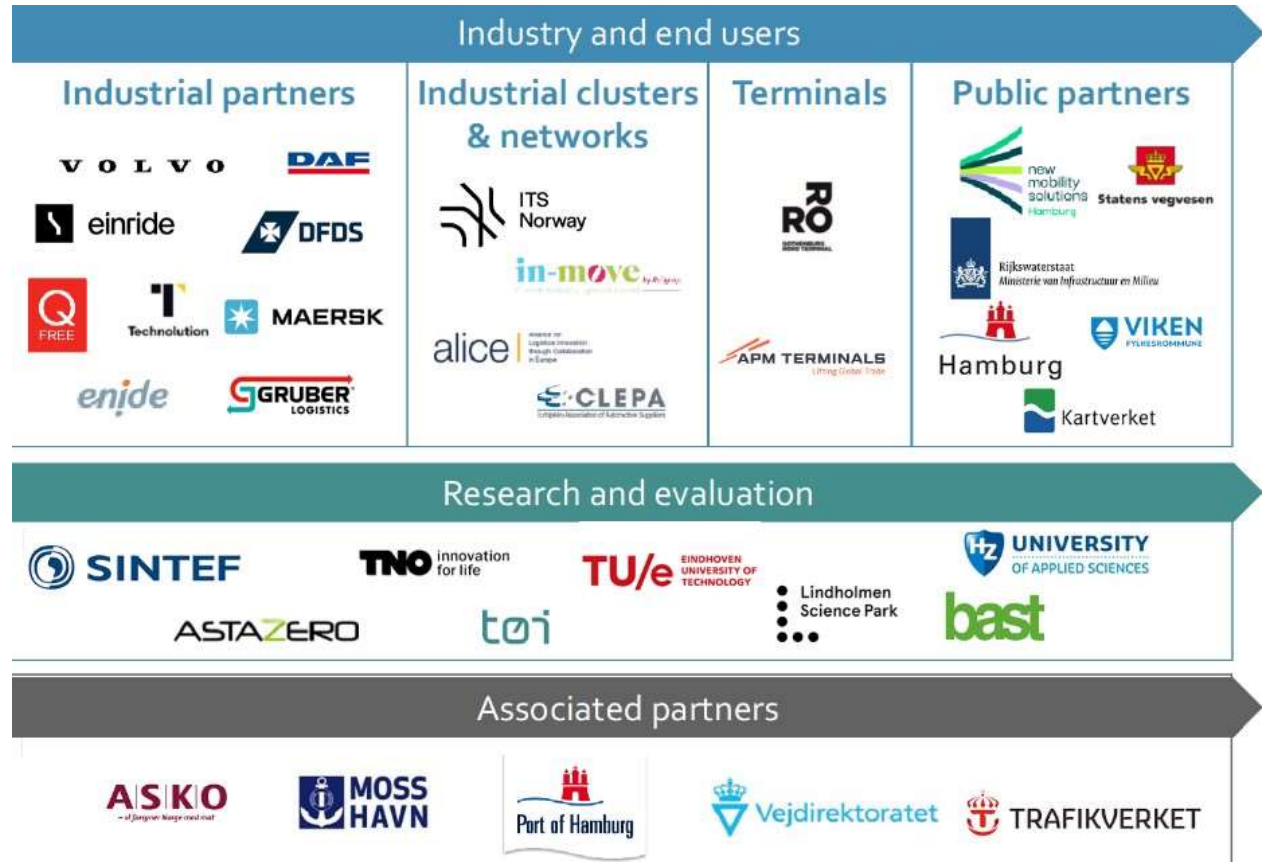
The Norwegian Mapping Authority and six other Norwegian partners are in the driver's seat of a major EU project that, within 3.5 years, will carry out heavy cargo transport from the Netherlands to Norway - without anyone human in the driver's seat.

---

The project is led by ITS Norway, the industry organization for intelligent transport systems (ITS). In addition to the Norwegian Mapping Authority, the five Norwegian partners are the Norwegian Public Roads Administration, the Institute of Transport Economics (TØI), SINTEF, Viken County Council and Q-Free. The list of 29 EU partners includes Volvo, DAF, DFDS, the Port of Gothenburg, New Mobility Solutions Hamburg and Eindhoven University of Technology (NL). Translated with DeepL.com (free version)



All the  
partners  
involved in  
the MODI:





#### PORT OPERATIONS

**Netherlands**  
CCAM vehicles in current logistics operations at port site



#### MOTORWAY TO HARBOUR

**Germany**  
CCAM vehicles approaching a confined area at the harbour



#### HUB-TO-HUB

**Sweden**  
Hub-to-hub traffic with CCAM heavy-duty vehicle



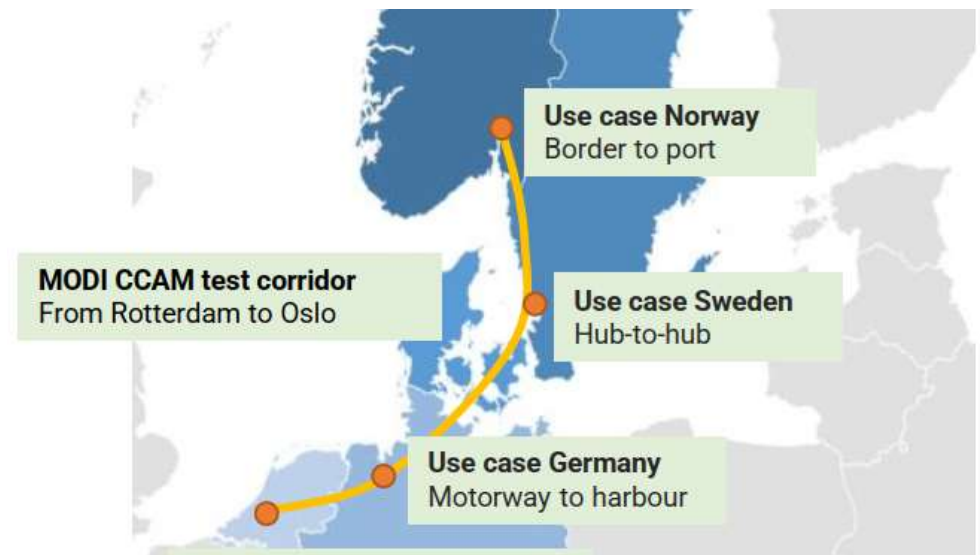
#### BORDER TO PORT

**Norway**  
CCAM vehicles from EU border crossing to a port



#### MODI CCAM CORRIDOR

MODI CCAM test corridor from Rotterdam to Oslo



## Norwegian Mapping Authority`s role in MODI

The Norwegian Mapping Authority is responsible for ensuring that all coordinates are fixed with high accuracy. This should work across national borders with the challenge in different national reference frames and coordinate systems.

- Two of the questions that NMA needs to get answer on is:

***How well do the different satellite positioning services perform on the MODI corridor?***

***How relevant are the different services for the acceleration of automated transport services in Europe?***

Therefore, we are conducting a comprehensive data collection in June 2025 with most known PPP/SSR services that are considered relevant to assess against this project.

