

National Report of Iceland

Finland March 15th 2023

Dalia Prizginiene

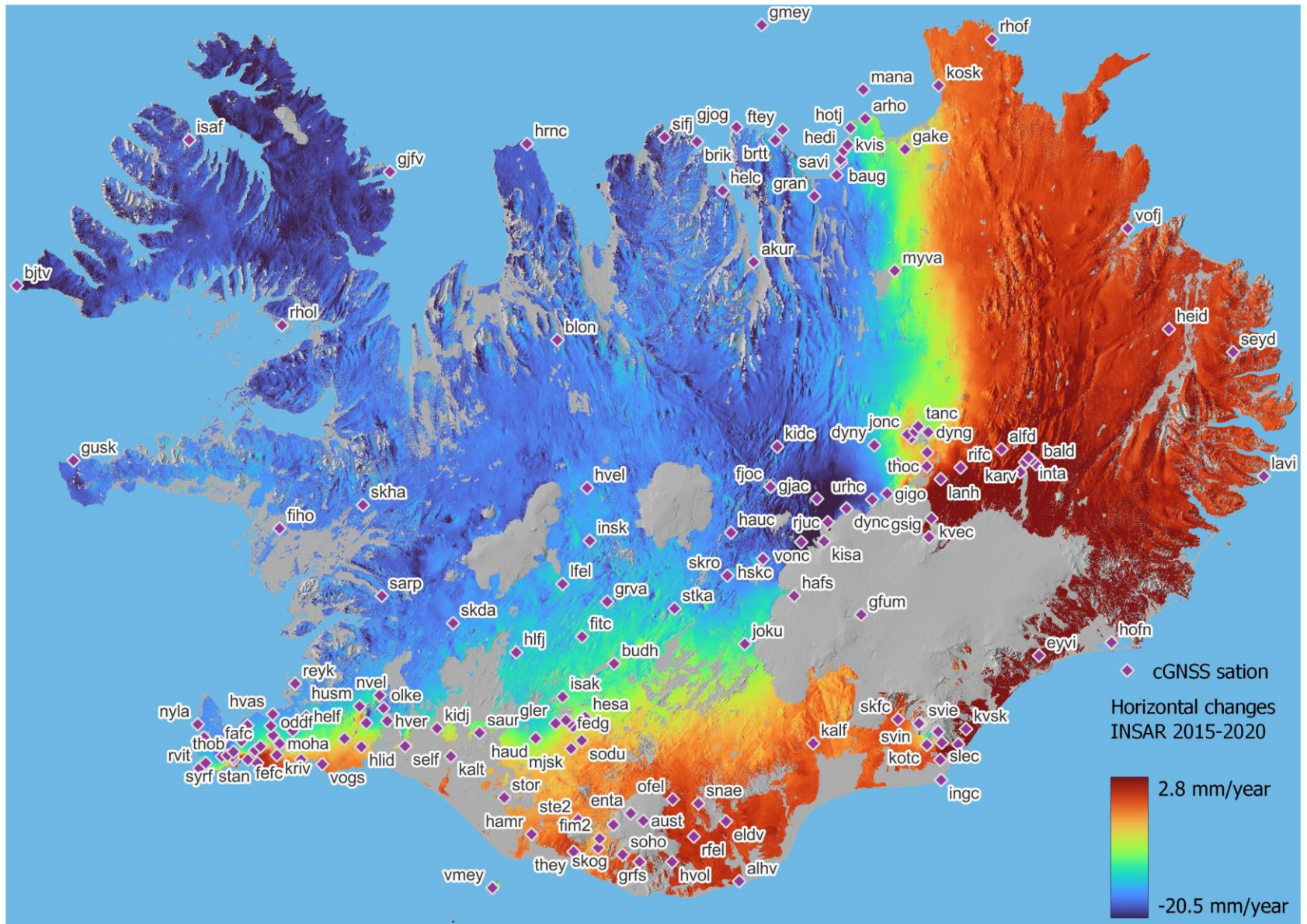
National Land Survey of Iceland

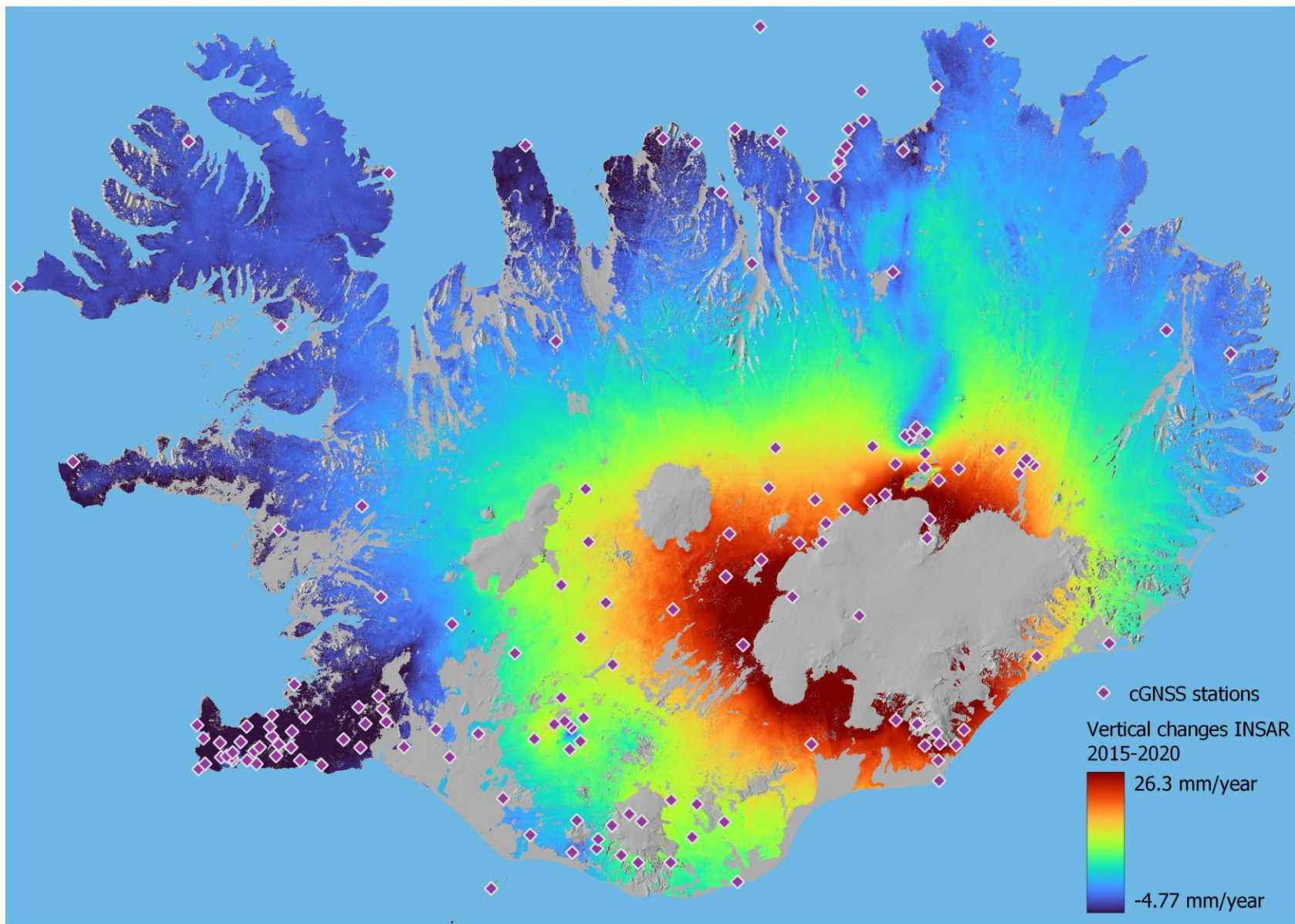
Main projects in 2022

- Processing of all GNSS data in Iceland from 1999 to 2022 with Bernese NKG AC style
- Participation in EPOS ÍSLAND
- Small changes in RTK network service

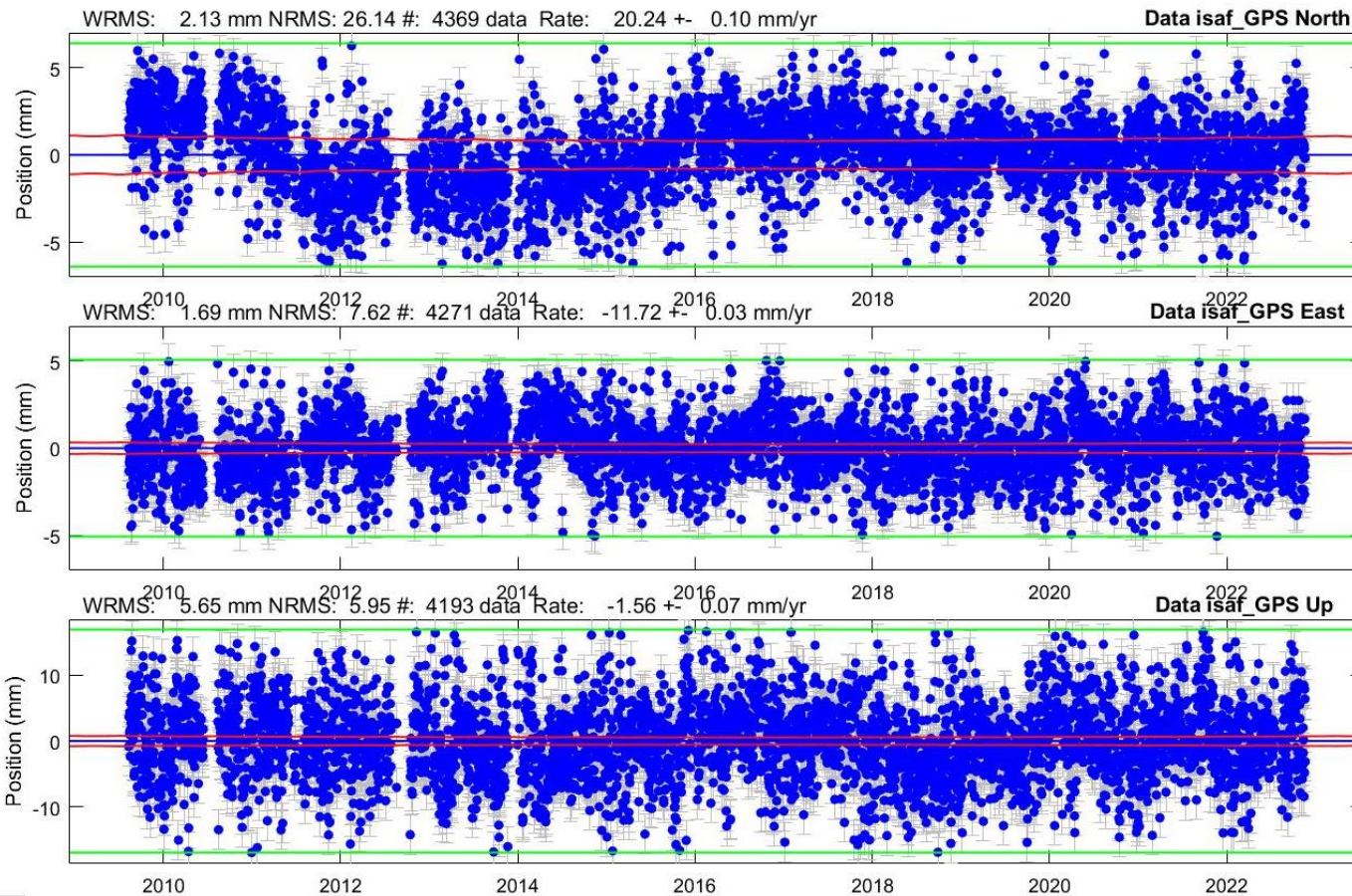
Processing of all GNSS data in Iceland from 1999

- Processing in Bernese with NKG AC settings
- 157 stations in Iceland
- Data range from 1 to 25 years
- Plans to analyse the data with various software
 - TSView, Hector, FODITS etc.
 - Special focus on discontinuities and velocity changes
- Plans to develop an interface to view the timeseries data in our geodetic database

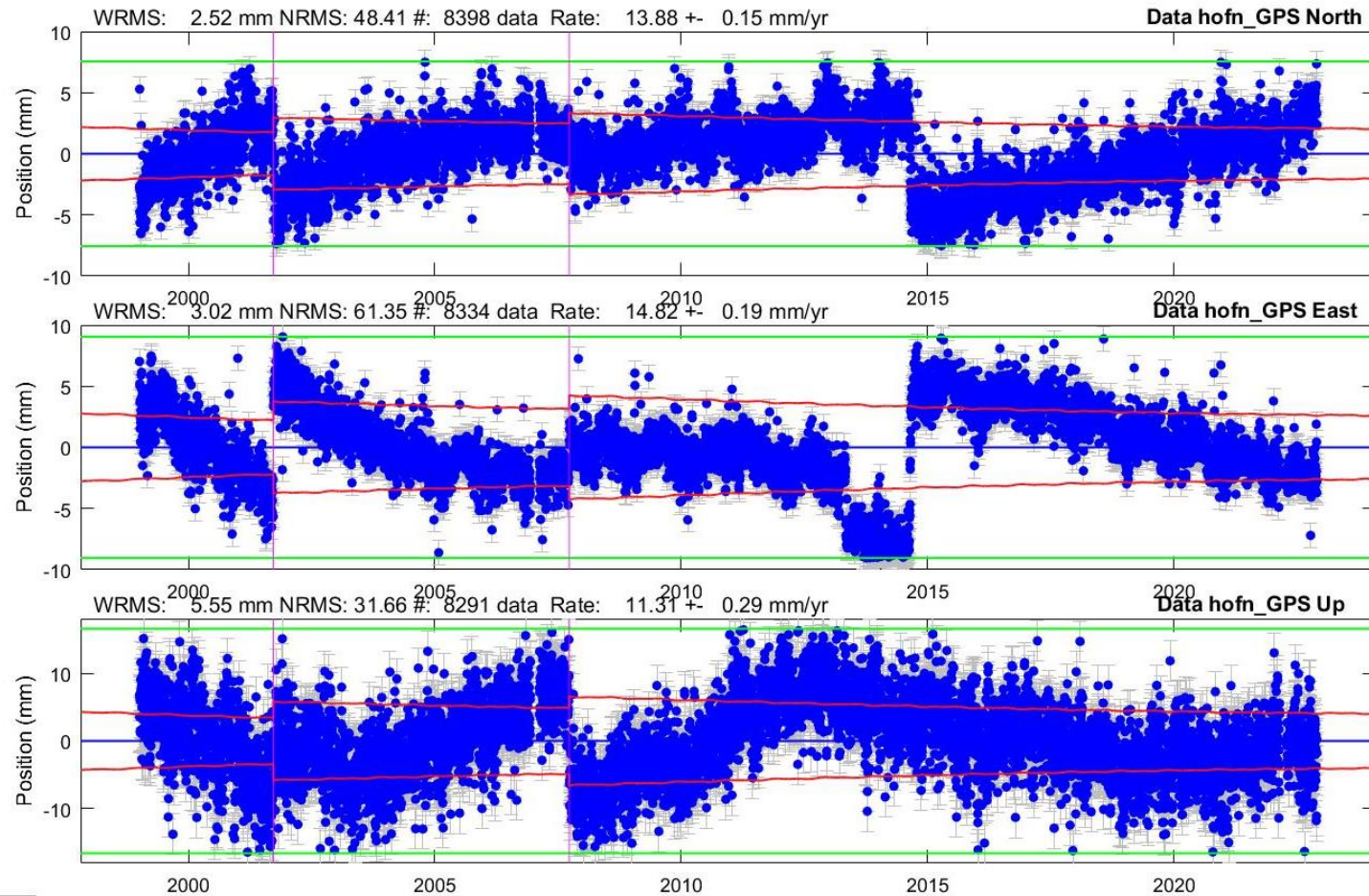




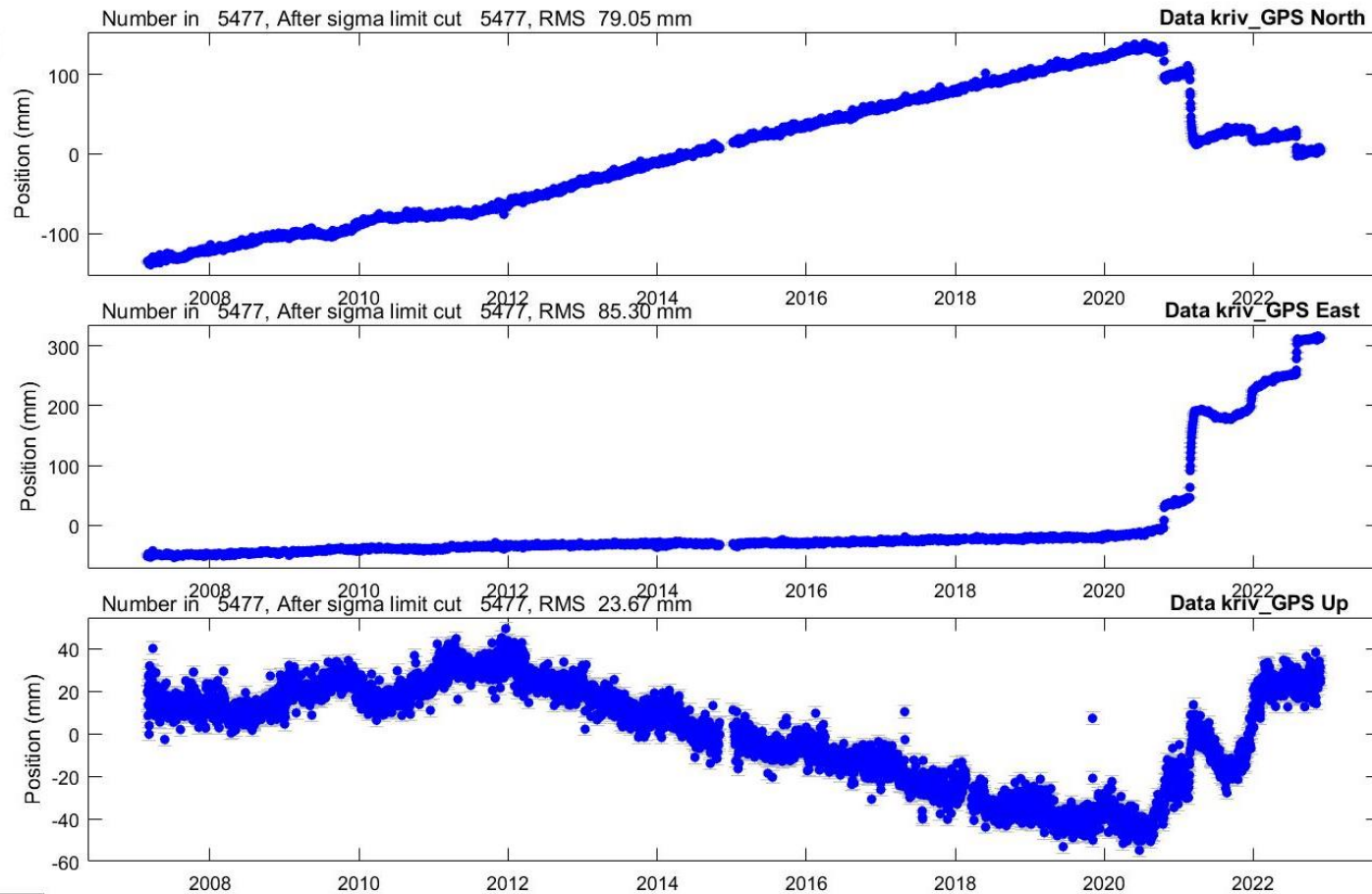
ISAF rather stable



HOFN, variations in velocity



KRIV, earthquakes and eruption

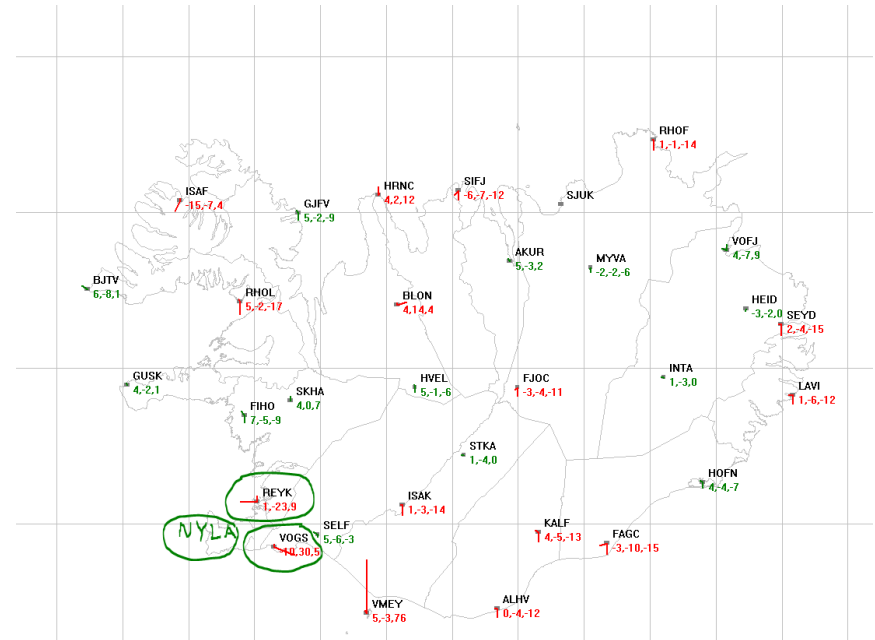


GNSMART RTK networking service

- REYK,VOGS,NYLA have been affected by eruption and these stations do not fit ISN2016 frame anymore.
- The coordinates of three reference stations are corrected by dx,dy,dz values before processing in GNNET

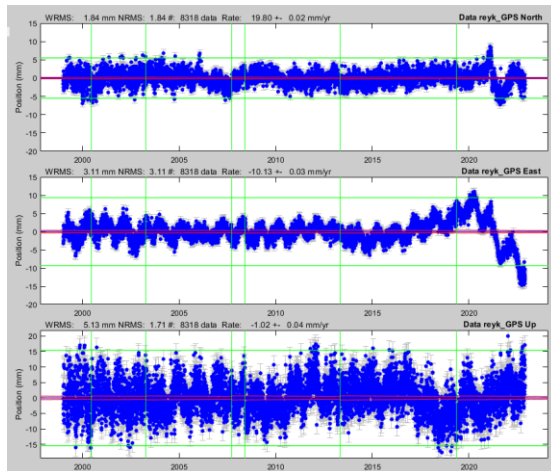
NYLA	dx	-0.062	REYK	dx	-0.013	VOGS	dx	0.027
	dy	-0.040		dy	-0.017		dy	0.025
	dz	0.026		dz	-0.007		dz	-0.001

- Transit from GNSMART version 1 to version 2

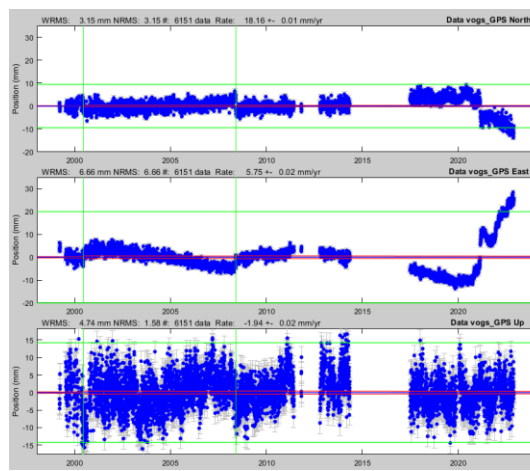


GNSMART RTK networking service

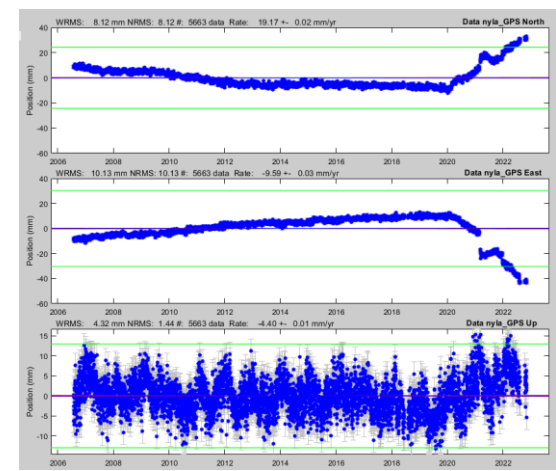
REYK



VOGS



NYLA



EPOS ÍSLAND

<https://epos-iceland.is>

- Structure

- Led by the Icelandic Meteorological Office
- Participants:
 - Institute of Earth Sciences of the University of Iceland
 - **The National land Survey of Iceland**
 - The Icelandic Institute of Natural History
 - The Iceland geo survey

- Funded

- By the Icelandic Infrastructure fund
- And the Icelandic Centre for Research (Rannís)

- Idea

- Collect and provide seismic data: various volcanic data like ash-, gas- and radar measurements from volcanic plumes, volcanic activity reports and guidelines, rock samples, geological maps, and collections of photographs and web camera images for main eruptions of last decades.
- Collect and provide GNSS data for last decades.
- All data are quality checked and standardized.
- The data are intended to be for research and education.

EPOS ÍSLAND

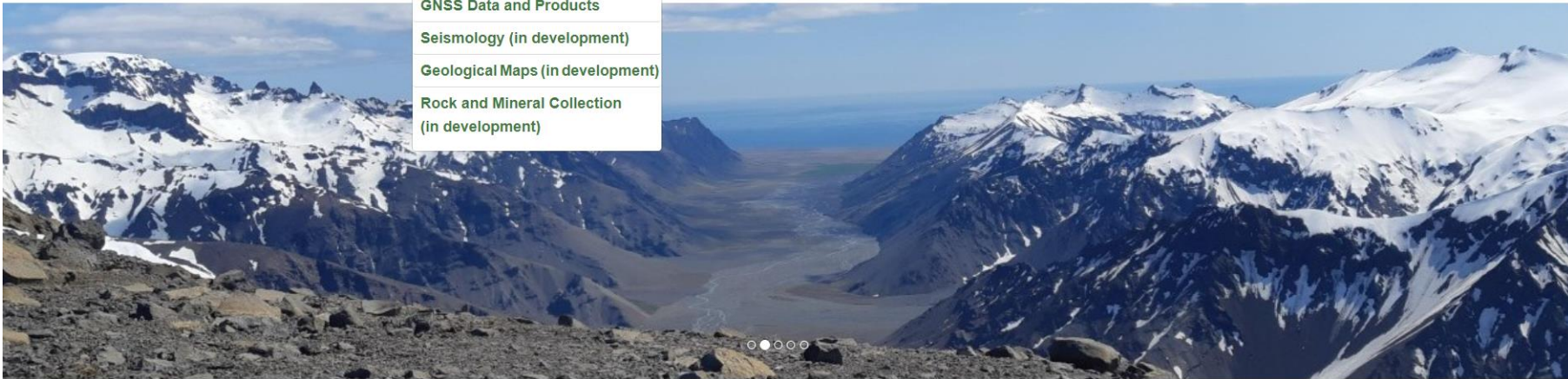
<https://epos-iceland.is>



[Home](#)
[Data & services ▾](#)
[Data portal](#)
[EPOS](#)
[Collaboration](#)
[Other infrastructure ▾](#)
[Data disclaimer](#)



- Volcano Observations
- GNSS Data and Products
- Seismology (in development)
- Geological Maps (in development)
- Rock and Mineral Collection (in development)



Welcome to EPOS Iceland

The first Roadmap for research infrastructure was published on July 2021 by the Ministry of Education and Culture (now Ministry of Higher Education, Science and Innovation) in cooperation with the board of Infrastructure Fund and



GNSS EPOS EUROPE

<https://gnssproducts.epos.ubi.pt/>

In 2024 the GLASS will be installed and EPOS-Iceland services will be compliant with EPOS standards.

Then we could find Icelandic GNSS data in EPOS Europe main portal

EPOS GNSS PRODUCTS PORTAL

Analysis Centres: INGV, UGA-CNRS, ROB-EUREF, SGO-EPND

Map showing GNSS stations across Europe.

Table of GNSS stations:

9-Char ID	Site Name	Country	Agency	Network	Availability
0022000DEU	Frankfurt Oder, DE	Germany	Not disclosed	UNKNOWN	●
0026000DEU	Guben, DE	Germany	Not disclosed	UNKNOWN	●
0139000DEU	Rothenburg, DE	Germany	Not disclosed	UNKNOWN	●

Thank you