



National Report of Sweden to the NKG General Assembly 2014 – geodetic activities in Sweden 2010–2014

17th NKG General Assembly
Göteborg, September 1st–4th 2014

Dan Norin, Lars E. Sjöberg, Jan M. Johansson,
Stig-Göran Mårtensson, Mehdi Eshagh





Organisations



- Lantmäteriet, the Swedish mapping, cadastral and land registration authority
 - Geodetic department (approximately 40 employees)
 - Geodesy 2000
- Universities



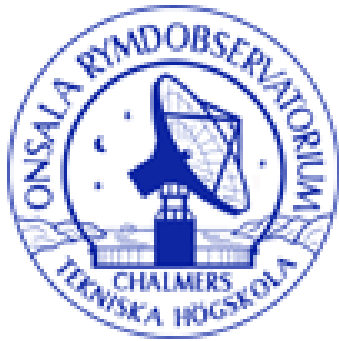


Royal Institute of Technology (KTH)





Onsala Space Observatory at Chalmers University of Technology





HiG, the University of Gävle

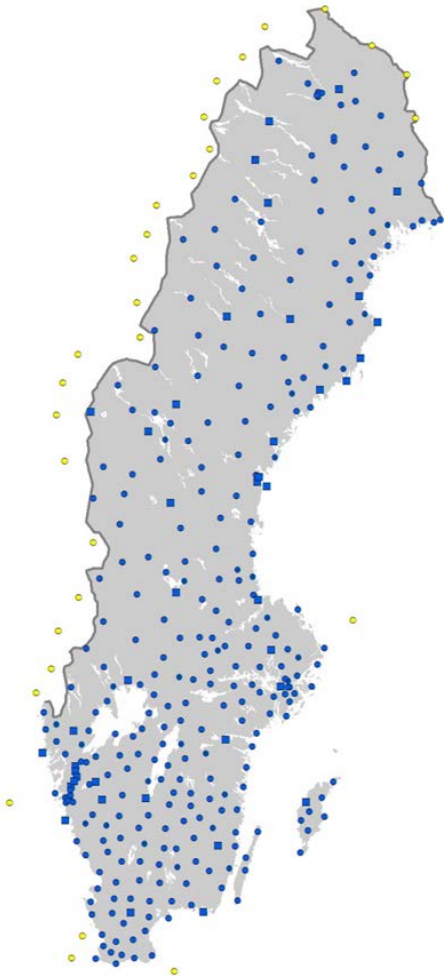




University West



Lantmäteriet – SWEPOS



- 305 reference stations
- 2400 network RTK users

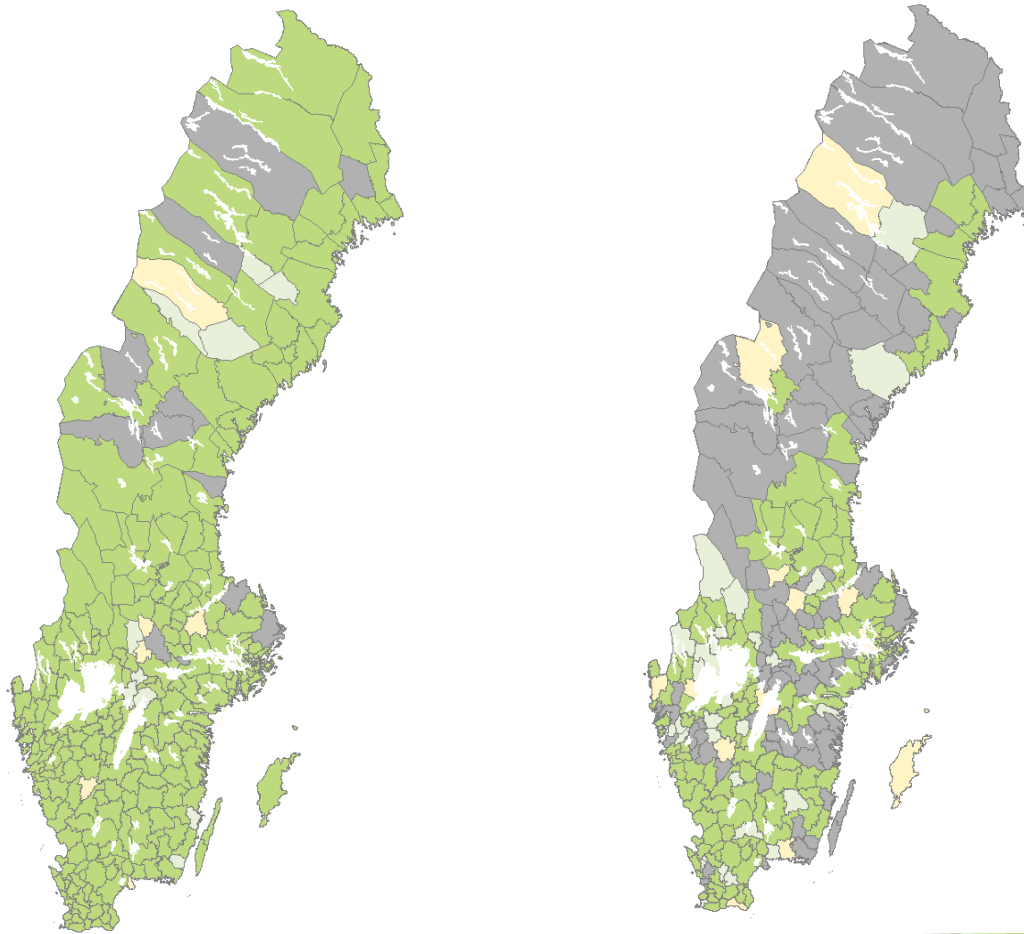


Lantmäteriet – SWEPOS – control centre

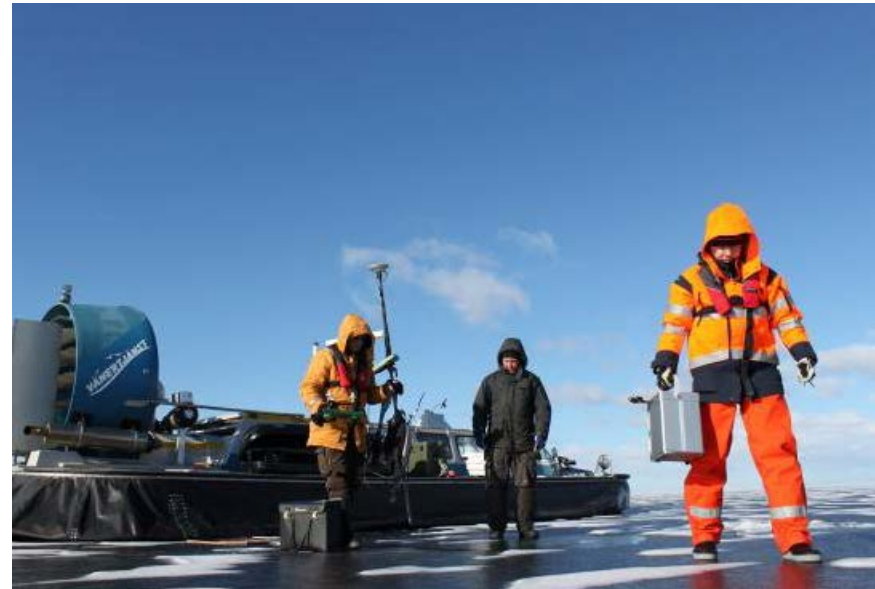
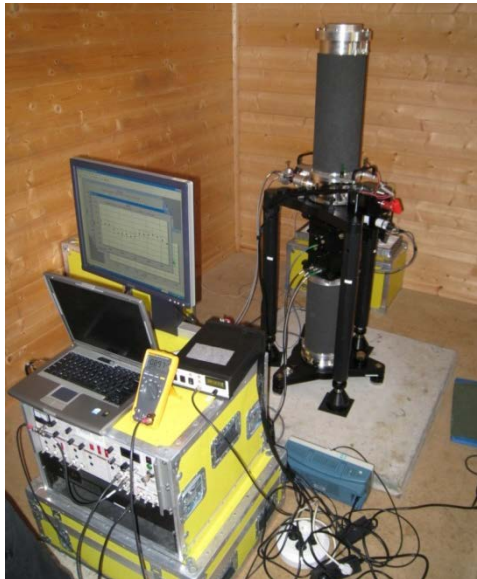




Lantmäteriet – SWEREF 99 and RH 2000



Lantmäteriet – gravimetry and geodynamics



- NKG geoid model and new geoid models
- Gravity measurements
- New gravity system
- GIA process and velocity modelling activities



Questions?

**Thank you for your
attention!**

**National Report of Sweden to the
NKG General Assembly 2014**

Dan Norin et al.

17th NKG General Assembly

Göteborg, September 1st–4th 2014

