

NKG WORKING GROUP - GEOID AND HEIGHT SYSTEMS: MARCH 12.-13., 2018

&

NKG WORKING GROUP - GEODYNAMICS: MARCH 13.-14., 2018

The Working Group meetings will take place in Helsinki.

NOTE: Contrary to earlier info the meetings will take place in different places on different days due to the large amount of participants. Please check the locations in the schedule below to make sure you are in the right place at the right time:

| Date | Time | Meeting | Location | Room(s) |
|--------------------|------------------|-----------------------------|---|------------------------------|
| Monday 12.3. | 12:00 - 13:00 | Lunch | Pasila Center for Government Agencies (Pasila Virastokeskus, Opastinsilta 12 C, 00520 Helsinki) | Lunch-restaurant Keltasirkku |
| | 13:00 - 17:00 | WG Geoid and Height Systems | Pasila Center for Government Agencies (Pasila Virastokeskus, Opastinsilta 12 C, 00520 Helsinki) | Neptunus & Pluto |
| | 19:00 - | Dinner | Restaurant Mamma Rosa, Helsinki | |
| Tuesday 13.3. | 08:30 - 12:00 | WG Geoid and Height Systems | Hotel Scandic Park (Mannerheimintie 46, Helsinki) | Discover 1 + 2 |
| | 12:00 - 13:00 | Lunch | Various options | |
| | 13:00 - 17:00 | WG Geodynamics | Hotel Scandic Park (Mannerheimintie 46, Helsinki) | Discover 1 + 2 |
| | 19:00 | Dinner | Helsinki Center | |
| Wednesday 14.3. | 08:30 - 12:00 | WG Geodynamics | Pasila Center for Government Agencies (Pasila Virastokeskus, Opastinsilta 12 C, 00520 Helsinki) | Aurinko |
| | 12:00 - 13:00 | Lunch | Pasila Center for Government Agencies (Pasila Virastokeskus, Opastinsilta 12 C, 00520 Helsinki) | Lunch-restaurant Keltasirkku |

PUBLIC TRANSPORT

Tickets for public transport can be bought beforehand from ticket machines or a kiosk. You must have a ticket before boarding a train or tram. In busses you can still buy tickets from the driver. When buying a ticket beforehand from a kiosk you get a single-charge card, which you must activate by showing it to the card reader when boarding a vehicle or entering a Metro platform area. Tickets are valid 80 minutes.

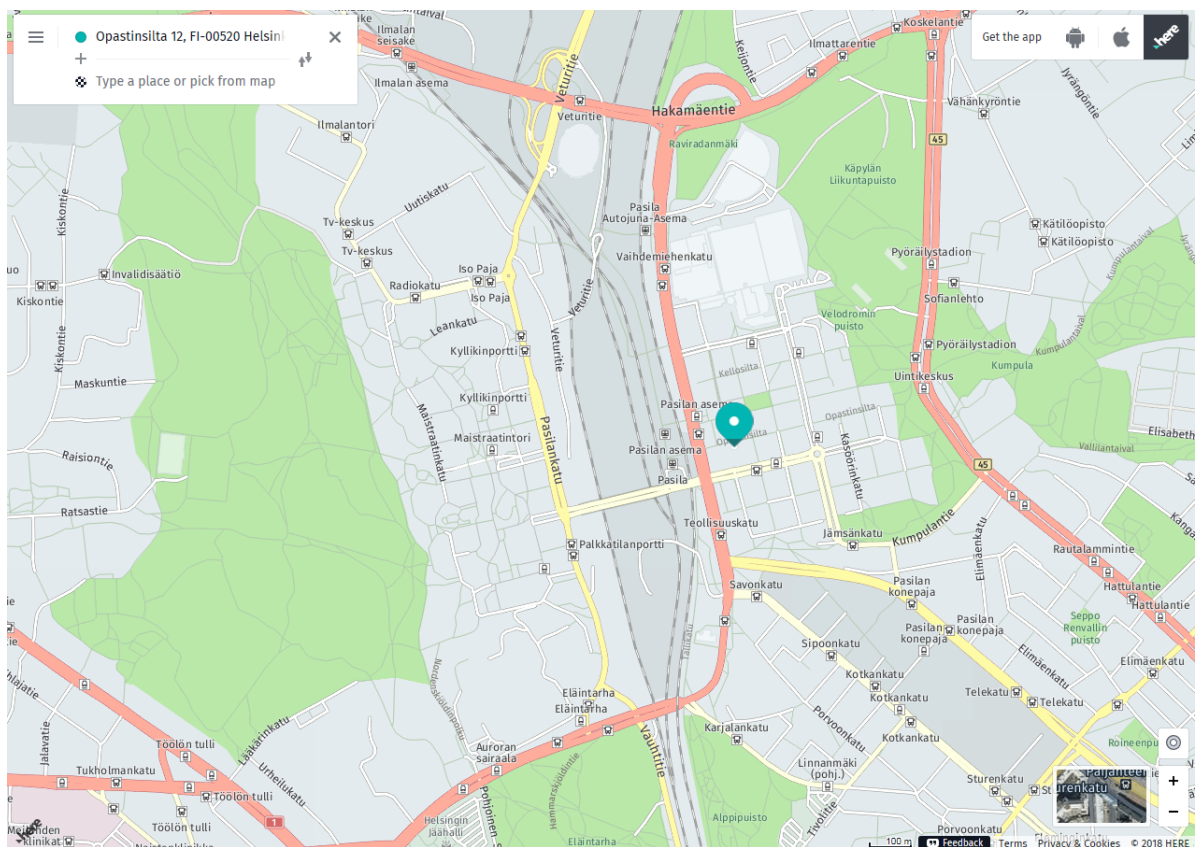
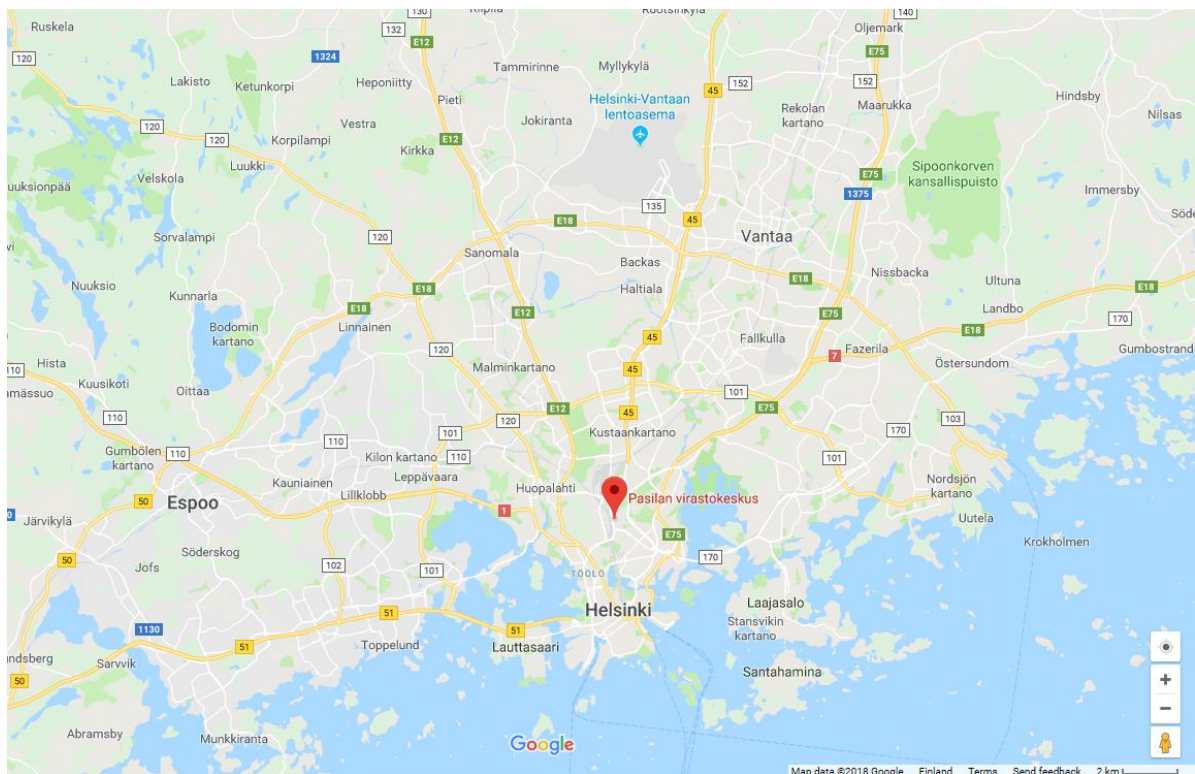
From the airport you need a regional ticket (Seutulippu), which is 5,00 € when bought from a HSL ticket machine or kiosk. Within the Helsinki area a single ticket is 2,90 € when bought from a ticket machine or beforehand from a kiosk and 3,20 € when bought from the bus driver.

It is also possible to buy 1-, 2-, or 3-day tickets that are valid in the whole regional ticket area (Helsinki, Espoo, Vantaa).

More information can be obtained from the HSL travel planner at www.reittipas.fi.

PASILA CENTER FOR GOVERNMENT AGENCIES (LOCATION FOR 12.3 & 14.3.)

Address: Pasila Virastokeskus, Opastinsilta 12 C, 00520 Helsinki)



HOW TO GET TO PASILA

From Helsinki-Vantaa Airport

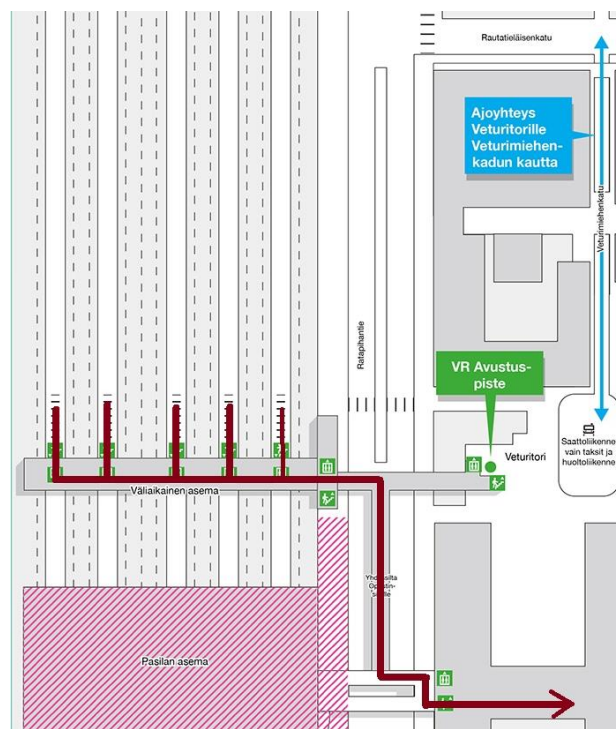
The easiest way to go from the airport (station Lentoasema) to Pasila (Station Pasila) is by train. The ride takes about 30 minutes. The train station is under ground between terminals 2A and 1. Both P- and I-trains will take you to Pasila. You must buy a regional ticket (Seutulippu) before boarding the train.

From Helsinki Center

From Helsinki center you can take any local train (with letters, no numbers) to Pasila. The ride takes about 5 minutes. Trams 7 and 9 from the harbors also pass the Virastokeskus. Make sure you have a ticket before entering the train or tram. In busses you can buy tickets from the driver.

IN PASILA

The old Pasila railway station has been broken down and a new station is being built. When arriving by train you should find the temporary bridge that goes over the tracks. Go up to the bridge and turn left. Right before the end of the bridge, turn to the right (direction Virastokeskus). At the end of this tunnel turn left and then take the most right doors. You should now enter an indoor walking street. Take the stairs to the second floor.



On 12.3. we will meet at the lunch-restaurant Keltasirkku, where you can get a warm lunch at your own expense. The meeting center is behind locked doors.

During the meetings you can reach us by calling Mirjam Bilker-Koivula at +358 50 5641 400



HOW TO GET TO HOTEL SCANDIC PARK HELSINKI

From Helsinki-Vantaa airport

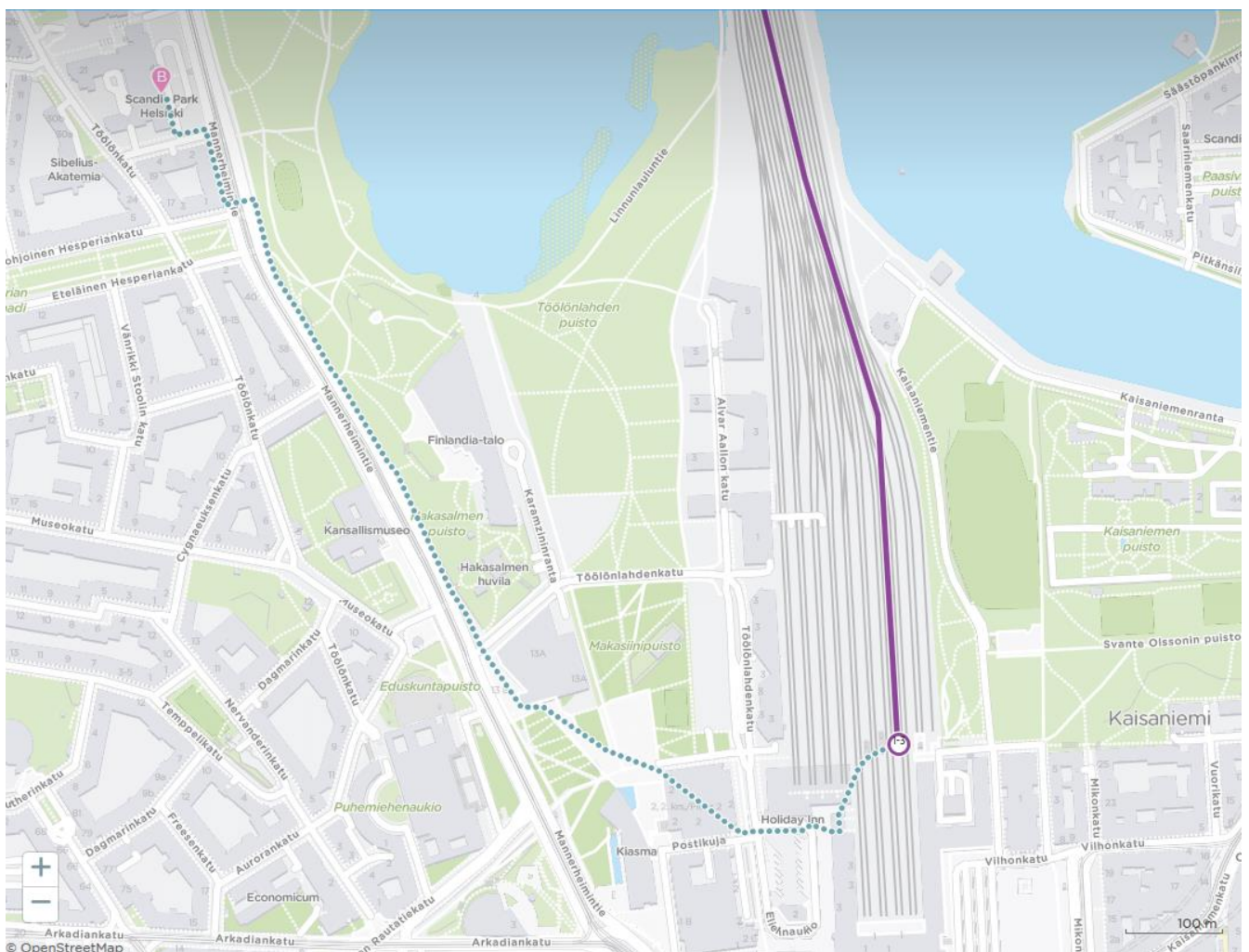
Take the train from the airport (station Lentoasema) to Helsinki Centre (Station Helsinki). The ride takes about 30 minutes. The train station is under ground between terminals 2A and 1. Both P- and I-trains will take you to Helsinki. You must buy a regional ticket (Seutulippu) before boarding the train. Proceed from the Helsinki railway station to the Scandic Park Hotel as described below.

From Pasila

Bus 848 passes the Pasila Virastokeskus (bus stop Pasilan asema) as well as the Scandic Park Hotel (bus stop Kansallismuseo). It goes two times per hour and it is about 15 minutes ride. Another option is to take any local train (with letters, no numbers) to Helsinki Center (this takes about 5 minutes.) and proceed from there as described below.

From Helsinki Center (Helsinki Railway station)

From the Helsinki Railway station you can walk to the Scandic Park hotel in about 15 minutes (~1 km). Alternatively you can walk to the Mannerheimintie-road and take tram 4 or 10 from tram stop Lasipalatsi and get of two stops further at Hesperian Puisto.



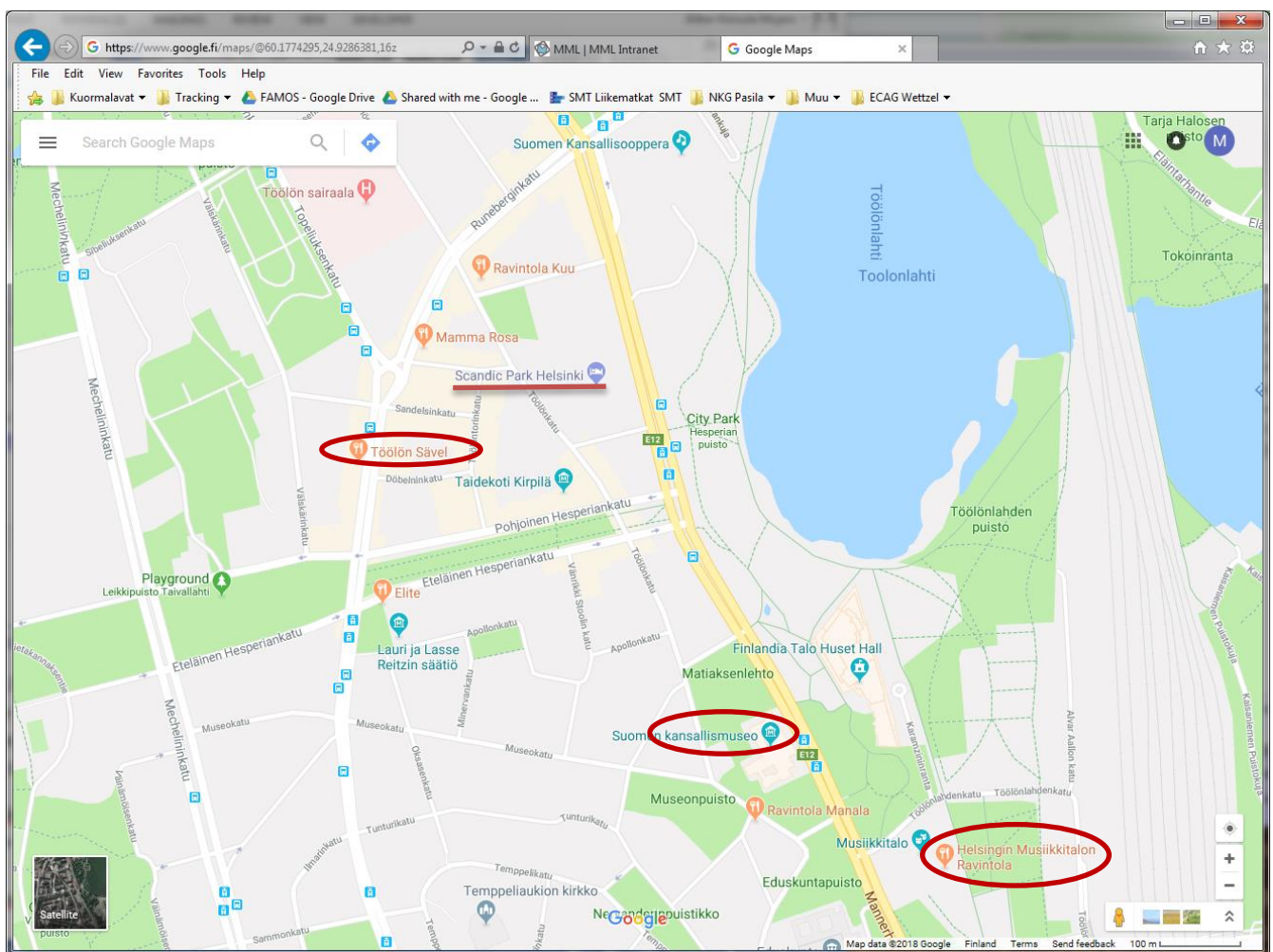
For more routes, options and details you are advised to consult the HSL travel planner at www.reittiopas.fi.

LUNCH ON TUESDAY 13.3.

The lunch on 13.3. will be on your own expenses and you can choose your own location. Lunch at the restaurant of the Scandic Park hotel is very expensive, except for the soup of the day (10€). There are a lot of restaurants/cafés in walkable distance of the hotel. At least three places offer a buffet-lunch for reasonable price:

- Töölön Sävel, Runeberginkatu 40, Helsinki
- Ravintola-Klubi at the Helsinki Music Center (Musiikkitalo), third floor, Kansalaistori 2G, Helsinki
- Cafe Kansallismuseo in the basement of the National Museum, Mannerheimintie 34, Helsinki

If you are more in for a sandwich, there is, for example, a Subway Sandwich at Mannerheimintie 56 North of the hotel.



ACCOMMODATION

No block reservations for accommodation have been made. In the center of Helsinki and its surroundings you can find a large variety of hotels. See for example [booking.com](https://www.booking.com).

In Pasila there is a Holiday Inn at the Helsinki Exhibition Center close to the meeting place. A Sokos Hotel can be found on the other side of the Pasila railway station building site.